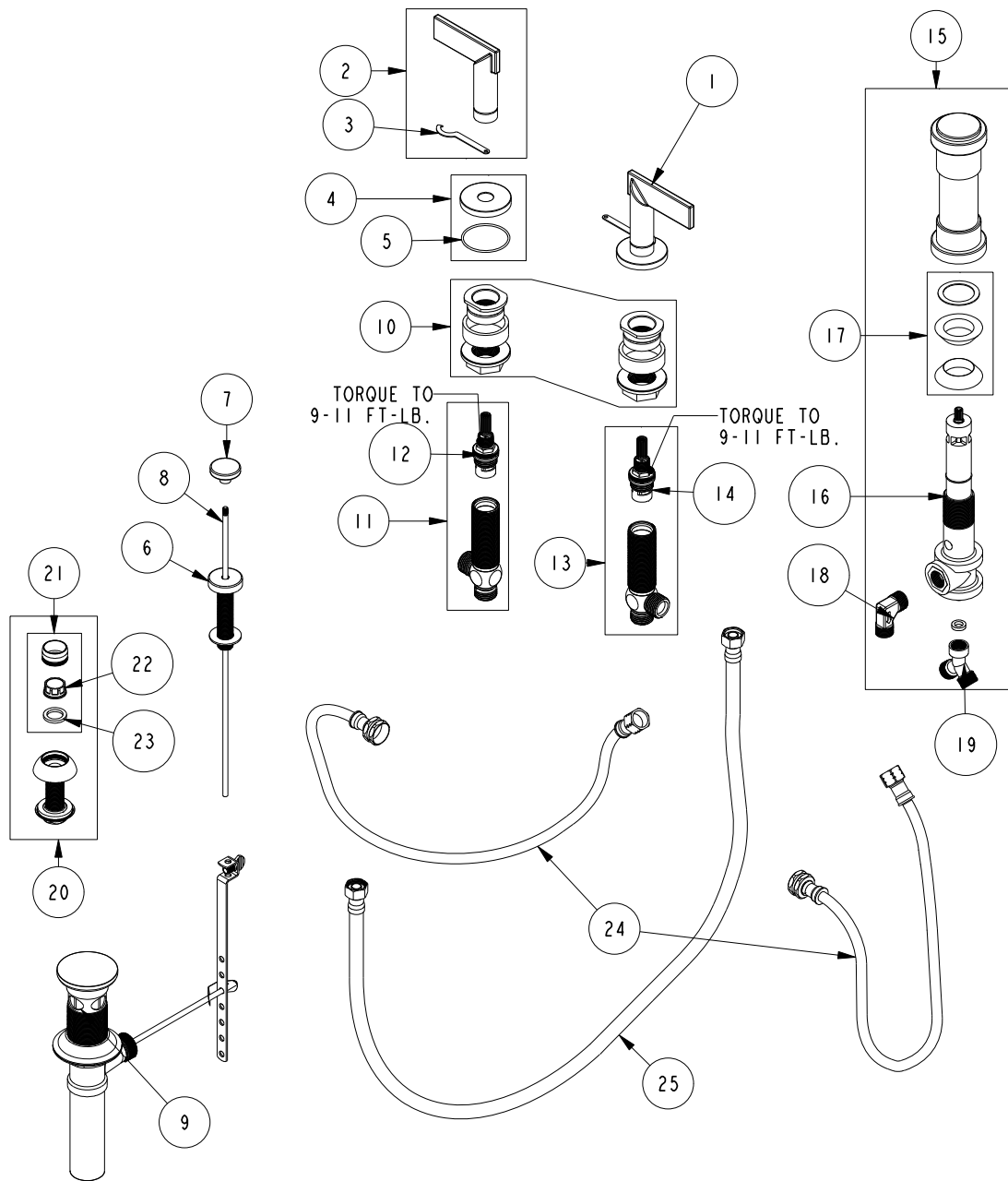


# REPLACEMENT PARTS



ITEM	PT/ASSY	SPECIFY FINISH	DESCRIPTION
1	3-608	YES	LEVER HANDLE TRIM
2	20-300	YES	LEVER ASM
3	92870		LEVER WRENCH
4	20-301	YES	ROUND HANDLE ESCUTCHEON ASM
5	91759		O-RING, #2-030, 50 DURO
6	8-038		POP-UP GUIDE ASM
7	80080		POP UP KNOB, ROUND
8	10288	YES	3/16" POP UP ROD
9	325	YES	POP UP ASSEMBLY
10	1-226		WIDESPREAD MOUNTING HARDWARE
11	1-527		W/S CART/BODY ASM (HOT)
12	1-002		W/S CARTRIDGE - HOT
13	1-526		W/S CART/BODY ASM (COLD)
14	1-001		W/S CARTRIDGE - COLD
15	8-039	YES	BIDET VACUUM BREAKER DIVERTER ASM
16	1-066		BIDET DIVERTER/V. BRKR VA
17	10-370		BIDET GASKET KIT
18	10610		ELBOW 3/8 - 19BS X 3/8
19	1-225		Y CONNECTOR w/ GASKET
20	2-236	YES	DOUCHE SPRAY ASSEMBLY
21	2-125	YES	AERATOR ASSEMBLY - BIDET
22	10605		AERATOR INSERT FULL
23	91014		WSHR, .59 ID X .84 OD X .095 THK, FLT, RUBBER NSF 61
24	10612		FLEX HOSE 10 IN.
25	10613		FLEX HOSE 23 IN.

**BIDET FAUCET**  
**2489**

REV D EN-5013 06/03/25

**NEWPORT BRASS.**

t: 949.417.5207 | www.newportbrass.com