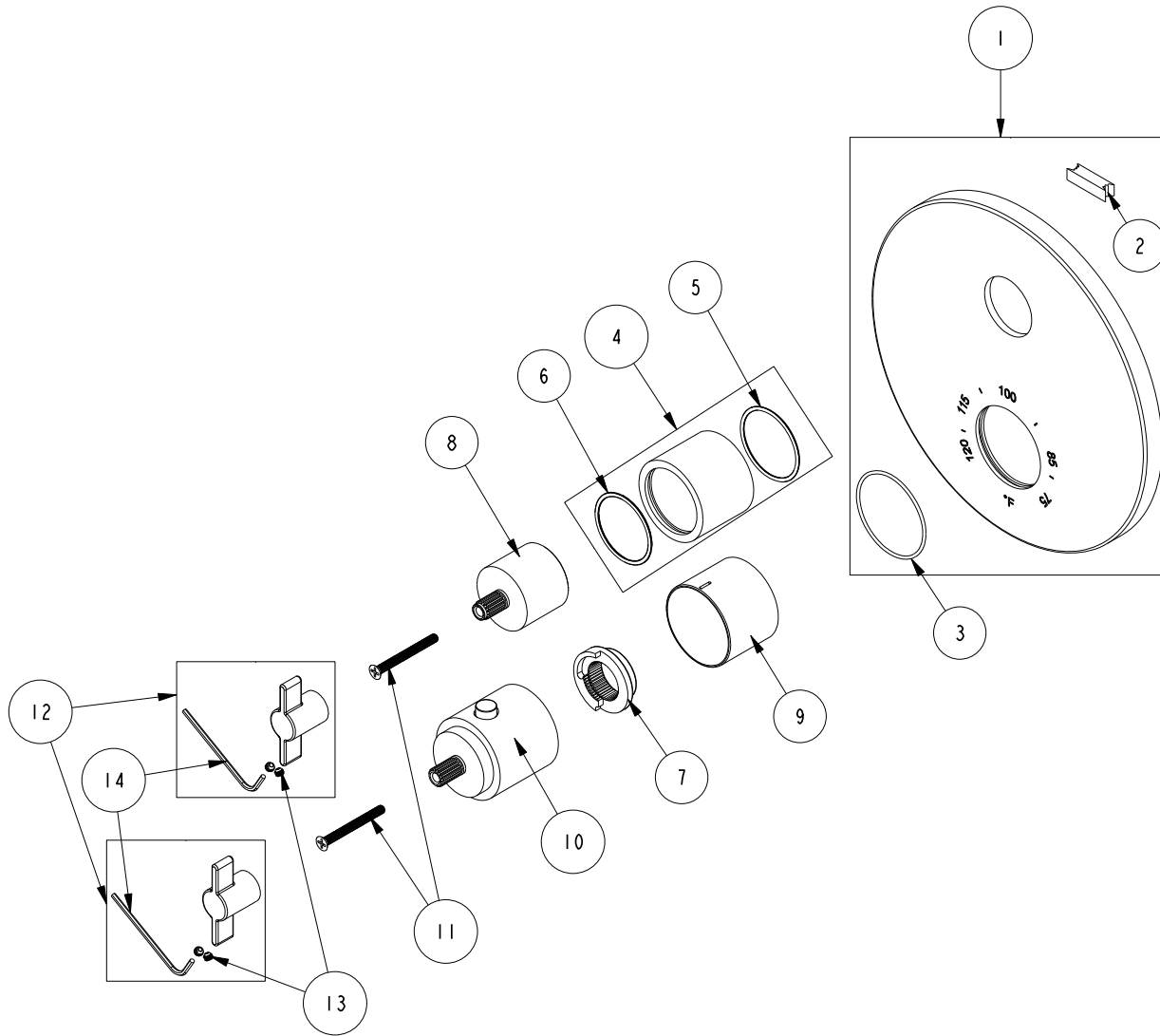


REPLACEMENT PARTS

| ITEM | PT/ASSY | SPECIFY FINISH | DESCRIPTION |
|------|---------|----------------|---|
| 1 | 20-116 | YES | TUB AND SHOWER PLATE ASM |
| 2 | H-78 | | TAPE NEO (2 FT) |
| 3 | 91678 | | O-RING, 1.5 X 42MM ID, EPDM, 65-75 DURO |
| 4 | 2-996 | YES | THREADED COLLAR ASM |
| 5 | 91843 | | O-RING, #2-028, EPDM, 50 DURO - GREY |
| 6 | 91080 | | O-RING, #2-027, EPDM, 65-75 DURO |
| 7 | 91308 | | TEMP LIMIT STOP - THERMO |
| 8 | 12348 | YES | HANDLE BONNET- CONT |
| 9 | 12345 | YES | SLEEVE - THERMO |
| 10 | 2-998 | YES | THERMO BONNET ASM |
| 11 | 92113 | | SCRW, M4 X .7 X 40 PHL FLT HD SS |
| 12 | 20-568 | YES | LEVER HANDLE ASM |
| 13 | 92000 | | SCREW 8 - 32 X 1/8 SS |
| 14 | 10192 | | HEX KEY TOOL, #8 5/64 |



1/2" THERMOSTATIC TRIM
3-3323TR

REV A EN-4984 04/28/25

NEWPORT BRASS.

t: 949.417.5207 | www.newportbrass.com