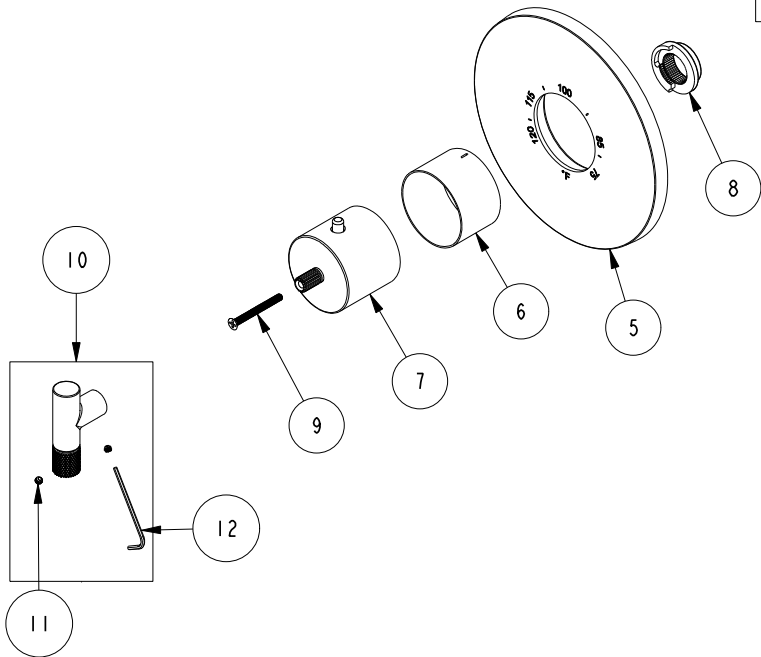
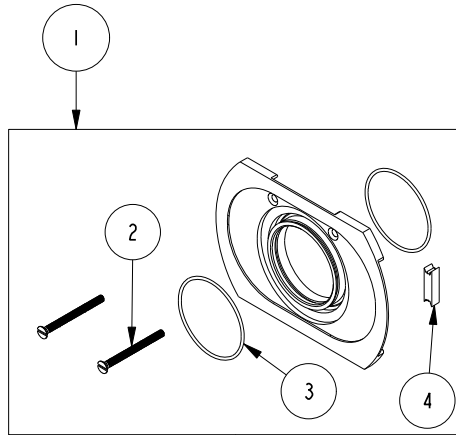


REPLACEMENT PARTS

ITEM	PT/ASSY	SPECIFY FINISH	DESCRIPTION
1	1-331		THERMO WALL PLATE ASM
2	92075	YES	SCRW, 8-32 X 2 SLT FLT HD BRASS
3	91757		O-RING, #2-033, EPDM, 50 DURO
4	H-78		TAPE NEO (2 FT)
5	12120	YES	THERMO PLATE
6	11029	YES	SLEEVE - THERMO
7	20-176	YES	THERMO BONNET ASM
8	91308		TEMP LIMIT STOP - THERMO
9	92113		SCRW, M4 X .7 X 40 PHL FLT HD SS
10	20-523	YES	LEVER HANDLE
11	92000		SCREW 8 - 32 X 1/8 SS
12	10192		HEX KEY TOOL, #8 5/64



3/4" THERMOSTATIC TRIM
3-3294TR

REV B EN-4972 04/24/25

NEWPORT BRASS.

t: 949.417.5207 | www.newportbrass.com