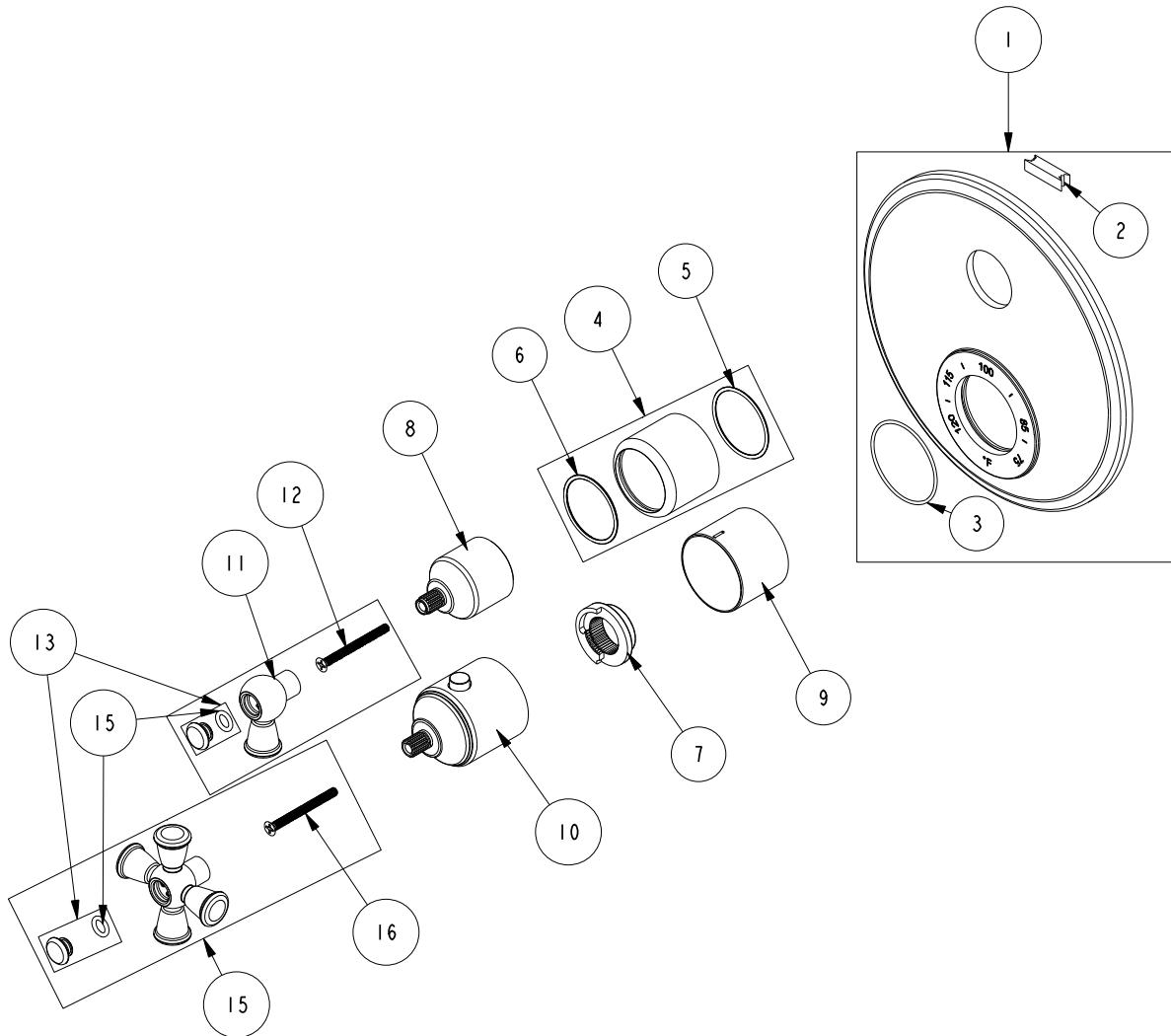


REPLACEMENT PARTS



| ITEM | PT/ASSY | SPECIFY FINISH | DESCRIPTION |
|------|---------|----------------|---|
| 1 | 2-994 | YES | TUB AND SHOWER PLATE ASM |
| 2 | H-78 | | TAPE NEO (2 FT) |
| 3 | 91678 | | O-RING, 1.5 X 42MM ID, EPDM, 65-75 DURO |
| 4 | 2-989 | YES | COLLAR ASM |
| 5 | 91843 | | O-RING, #2-028, EPDM, 50 DURO - GREY |
| 6 | 91080 | | O-RING, #2-027, EPDM, 65-75 DURO |
| 7 | 91308 | | TEMP LIMIT STOP - THERMO |
| 8 | 12344 | YES | HANDLE BONNET |
| 9 | 12345 | YES | SLEEVE - THERMO |
| 10 | 2-991 | YES | THERMO BONNET ASM |
| 11 | 2-992 | YES | THERMO LEVER HANDLE ASM |
| 12 | 92206 | | SCRW, M4 X 0.7 X 45 PHIL FLT HD SS |
| 13 | 20-682 | YES | HANDLE CAP ASM |
| 14 | 91158 | | O-RING, 2 X 7MM ID, EPDM, 65-75 DURO |
| 15 | 2-993 | YES | THERMO CROSS HANDLE ASM |
| 16 | 92206 | | SCRW, M4 X 0.7 X 45 PHIL FLT HD SS |

THERMO TUB / SHOWER
3-2403TR

REV B EN-4984 05/02/25

NEWPORT BRASS.

t: 949.417.5207 | www.newportbrass.com