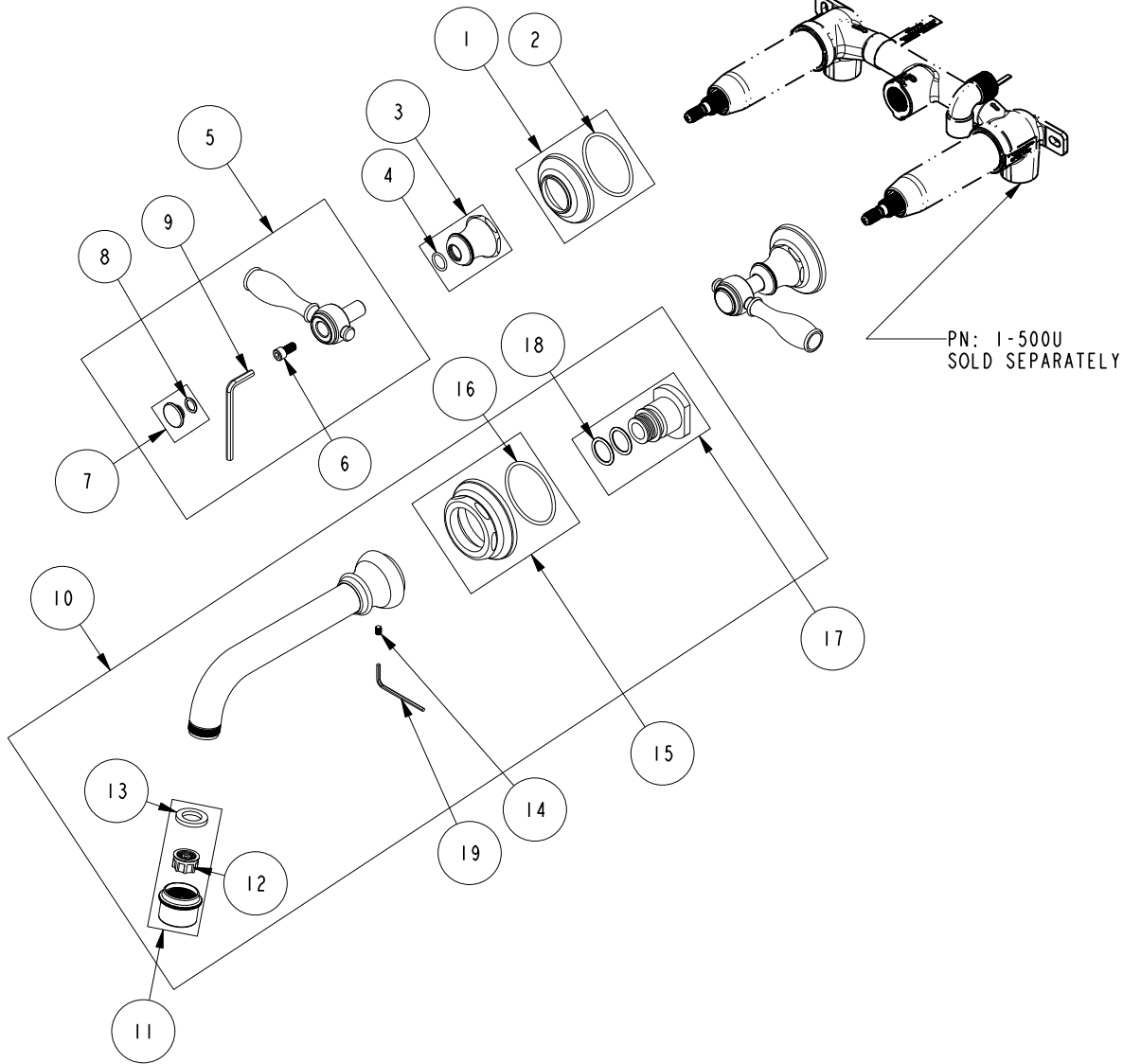


REPLACEMENT PARTS



ITEM	PT/ASSY	SPECIFY FINISH	DESCRIPTION
1	20-740	YES	ESCUTCHEON ASM
2	91753		O-RING, # 2-136, EP, 50 DURO - GREY
3	2-491	YES	HANDLE BONNET ASM
4	91019		O-RING, #2- 014, EPDM, 65-75 DURO, NSF 61
5	2-534	YES	LEVER HANDLE ASM
6	92141		SCREW, CAP HD 1/4-20 X 1/2
7	20-739	YES	HANDLE CAP ASM
8	91017		O-RING #2-012
9	92846		HEX KEY, 3/16" ALLOY STEEL
10	3-667	YES	WALL TUB SPOUT
11	20-854	YES	STREAM STRAIGHTENER ASM
12	91329		STREAM STRAIGHTENER STANDARD
13	91039		WSHR, .625 ID X 1.00 OD X .125 THK, RUBBER
14	92013		SCRW, 10-24 X 1/4 SKT HD FLT PT SS
15	2-560	YES	TUB SPOUT ESCUTCHEON ASM
16	91753		O-RING, # 2-136, EP, 50 DURO - GREY
17	1-164		WALL MOUNT QICK CONNECT ASM
18	91114		O-RING, #2- 116, EPDM, 65-75 DURO, NSF 61
19	10159		HEX KEY, 3/32 ALLOY STEEL

WALL-MOUNTED TUB TRIM
3-1775

REV F EN-4976 07/25/25

NEWPORT BRASS.

t: 949.417.5207 | www.newportbrass.com