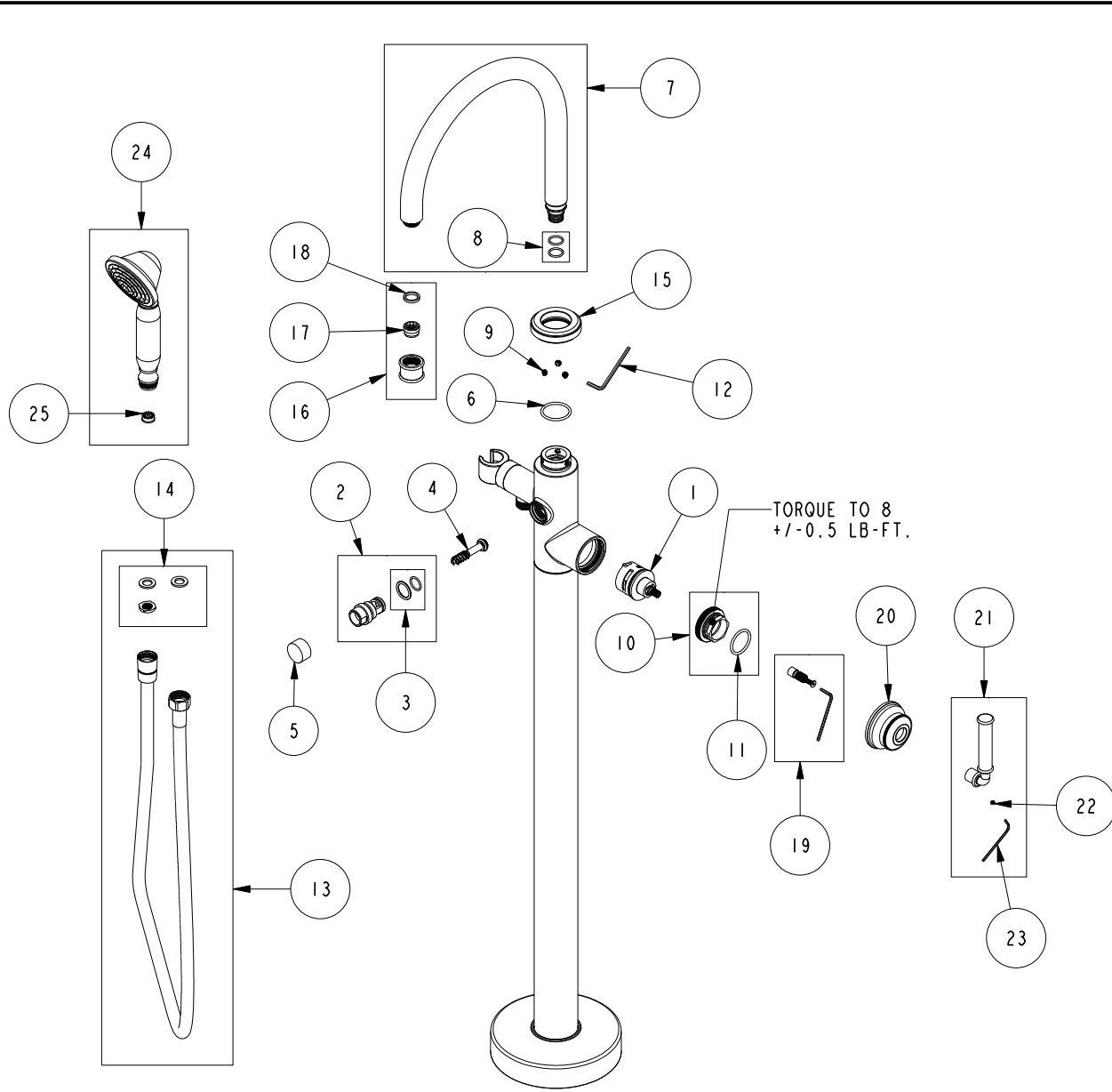


REPLACEMENT PARTS



ITEM	PT/ASSY	SPECIFY FINISH	DESCRIPTION
1	1-513		PROGRESSIVE CARTRIDGE
2	20-260	YES	DIVERTER HOUSING ASM
3	10-340		DIVERTER ASM O-RING KIT
4	20-259		DIVERTER ASM
5	12191	YES	DIVERTER BUTTON
6	91505		O-RING, #2-123, EPDM, 65-75 DURO
7	30-126	YES	SPOUT MODULE ASM
8	10-384		FREE STANDING SPOUT O-RING KIT
9	92017		SCRW, 1/4-20 X 3/16 SKT HD CUP PT SS
10	1-776		RETAINING NUT ASM.
11	91259		O-RING, #2-121, EPDM, 65-75 DURO
12	92422		HEX KEY, 1/8" ALLOY STEEL
13	284	YES	59 IN. SPIRAL SHOWER HOSE
14	10-360		WASHER AND FILTER SCREEN KIT
15	13895	YES	DECORATIVE COLLAR
16	20-731	YES	FLOW STRAIGHTENER
17	91330		STREAM STRAIGHTENER JUNIOR
18	91500		GSKT, .578 ID X .728 OD X .102 THK EPDM
19	10-304		CARTRIDGE STEM ADAPTER KIT
20	13893	YES	HANDLE HUB
21	20-730	YES	LEVER HANDLE ASM
22	92000		SCREW 8 - 32 X 1/8 SS
23	10192		HEX KEY TOOL, #8 5/64
24	283-201	YES	SINGLE FUNCTION HAND SHOWER
25	12832		FLOW REGULATOR, 1.8 GPM MAX

TUB AND HANDSHOWER SET
2940-4261

REV C EN-4823-3 10/30/25

NEWPORT BRASS

t: 949.417.5207 | www.newportbrass.com